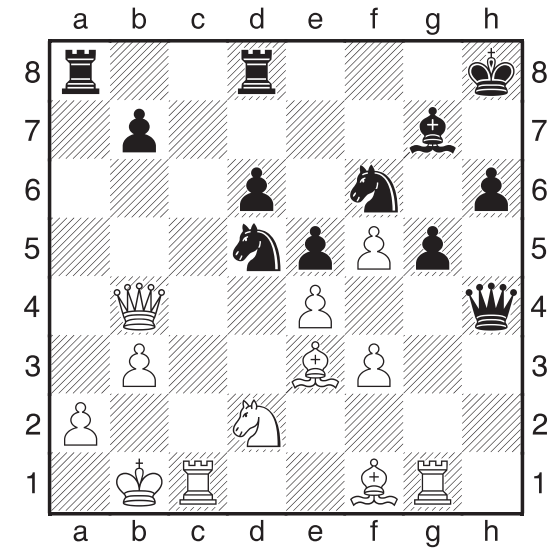




PAINTED  PIECES
ART CHESS FROM PURLING LONDON

GAME NOTATION GUIDE



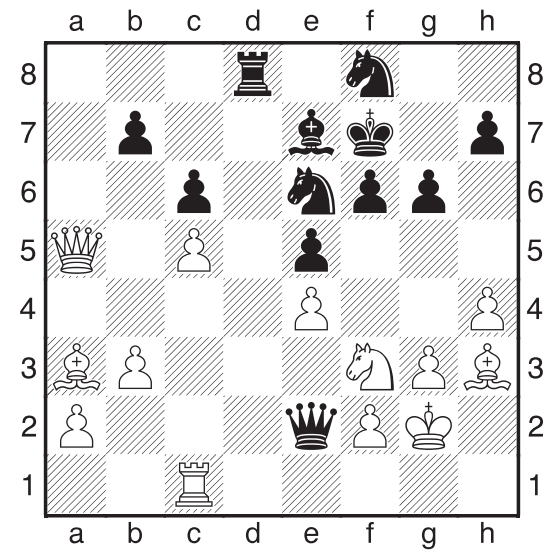


Magnus Carlsen - Judit Polgar

Cuadrangular (UNAM), Mexico City, 2012

- | | | | | | |
|-----------|-----|----------|--------------|-----------|------|
| 1. Nf3 | Nf6 | 19. b3 | Bc6 | 37. Rh2 | Rac8 |
| 2. c4 | g6 | 20. Nb6 | Rd8 | 38. Bc4 | Nxc4 |
| 3. Nc3 | Bg7 | 21. Qc3 | Nf4 | 39. bxc4 | Kg8 |
| 4. e4 | d6 | 22. Bf1 | h6 | 40. Rb2 | Rc7 |
| 5. d4 | O-O | 23. Qxa5 | f5 | 41. c5 | Nd3 |
| 6. h3 | e5 | 24. gxf5 | Qxh5 | 42. Rd2 | Rcd7 |
| 7. d5 | Na6 | 25. Re1 | Nf6 | 43. c6 | bx6 |
| 8. Be3 | Qe8 | 26. Nd5 | Ra8 | 44. Rxc6 | Kf7 |
| 9. g4 | Nc5 | 27. Qb4 | Rfd8 | 45. Rb6 | Nc5 |
| 10. Nd2 | a5 | 28. f3 | Qh4 | 46. Rxd7+ | Rxd7 |
| 11. Be2 | c6 | 29. Rc1 | Bxd5 | 47. Nf2 | h5 |
| 12. Rg1 | Kh8 | 30. cxd5 | N4xd5 | 48. Rc6 | Rd2 |
| 13. h4 | Ng8 | 31. Bxg5 | Qxg5 | 49. Nh3 | Ne6 |
| 14. Qc2 | Bd7 | 32. Rxg5 | Nxb4 | 50. a4 | Rh2 |
| 15. O-O-O | cx5 | 33. Rg2 | d5 | | O-1 |
| 16. Nxd5 | Ne6 | 34. exd5 | Nfxd5 | | |
| 17. h5 | g5 | 35. Ne4 | Ne3 | | |
| 18. Kb1 | Ba4 | 36. f6 | Bf8 | | |

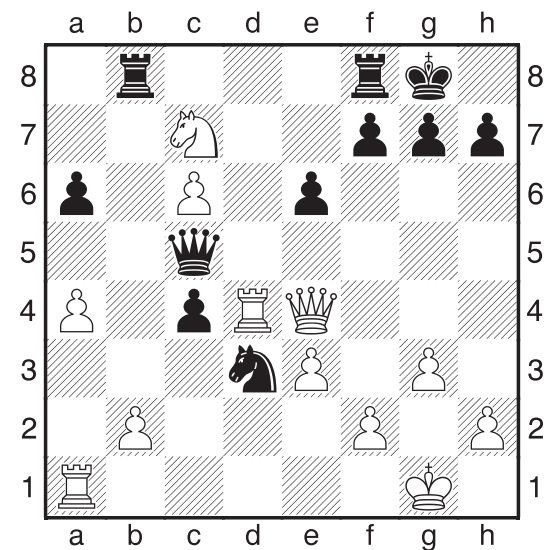
Appears with Daniela Raytchev's **Glass Ceiling**.



Anatoly Karpov - Yasser Seirawan
Saint Louis Blitz (Round 5), 2012

- | | | | |
|----------|------|-----------------|------|
| 1. d4 | Nf6 | 19. Rc4 | Ng7 |
| 2. c4 | d6 | 20. Rec1 | Ne6 |
| 3. Nf3 | Bg4 | 21. Bf1 | f6 |
| 4. Nbd2 | Nbd7 | 22. h4 | Be7 |
| 5. h3 | Bh5 | 23. Bh3 | Ndf8 |
| 6. Qb3 | Rb8 | 24. Qe2 | Red8 |
| 7. e4 | e5 | 25. R4c2 | Rd7 |
| 8. Qe3 | a5 | 26. Qc4 | Kf7 |
| 9. Bd3 | Be7 | 27. Ba3 | Rbd8 |
| 10. O-O | O-O | 28. Kg2 | Rd3 |
| 11. b3 | c6 | 29. Rc3 | Qd7 |
| 12. Bb2 | Qc7 | 30. Qa4 | Rxc3 |
| 13. Rac1 | Rfe8 | 31. Rxc3 | Qd1 |
| 14. Rfe1 | Bf8 | 32. Rc1 | Qe2 |
| 15. dxe5 | dxe5 | 33. Qxa5 | Rd3! |
| 16. c5 | Bxf3 | 34. Ne1 | Rd2 |
| 17. Nxf3 | Nh5 | | O-1 |
| 18. g3 | g6 | | |

Appears with Christian Nagel's **EXPAND YOUR MIND®**.

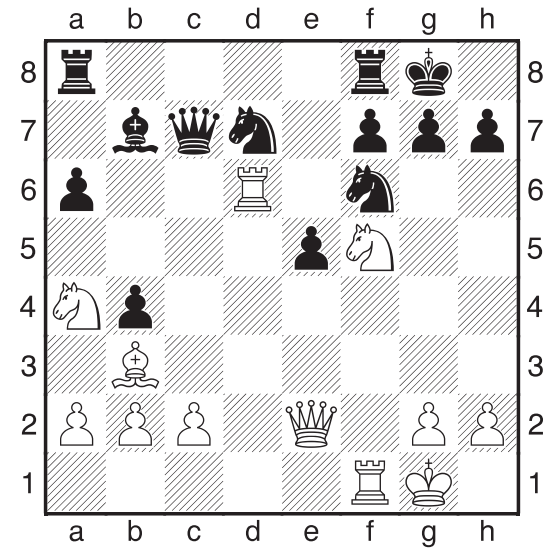


Jeffery Xiong - Wesley So

U.S. Chess Championship (Round 9), Saint Louis, 2017

- | | | | |
|-----------|-------|-----------------|-------|
| 1. d4 | Nf6 | 17. Bxe7 | Qxe7 |
| 2. c4 | e6 | 18. c6 | Ne5 |
| 3. g3 | d5 | 19. Qe4 | Qc5 |
| 4. Bg2 | Be7 | 20. Nd5 | Nd3 |
| 5. Nf3 | O-O | 21. Nxc7 | Nxf2! |
| 6. O-O | dx c4 | 22. Kxf2 | Rxb2+ |
| 7. Qc2 | a6 | 23. Kf1 | Qh5 |
| 8. a4 | Bd7 | 24. Qg4 | Qxh2 |
| 9. Rd1 | Bc6 | 25. Qf3 | c3 |
| 10. Nc3 | Bxf3 | 26. Rc1 | e5 |
| 11. Bxf3 | Nc6 | 27. Rh4 | Qd2 |
| 12. Bxc6 | bxc6 | 28. Rd1 | Rd8 |
| 13. Bg5 | Rb8 | 29. Nd5 | Rxd5 |
| 14. e3 | c5 | 30. Rd4 | Rxd4 |
| 15. dx c5 | Qe8 | 31. exd4 | Qxd1+ |
| 16. Rd4 | Nd7 | | O-1 |

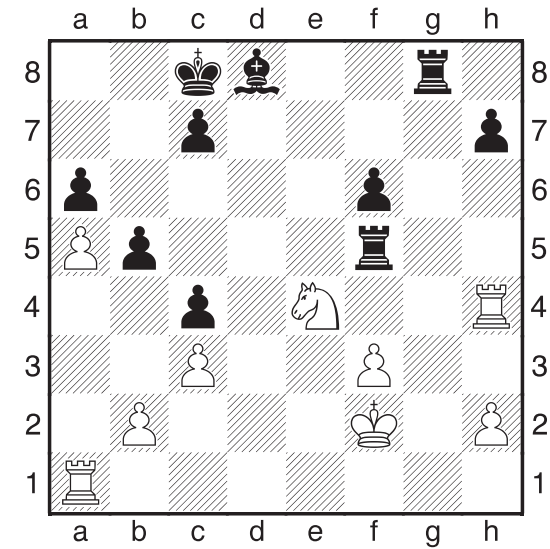
Appears with Olivia Pilling's **Untitled (Gold & Purple)**.



Maurice Ashley - Lisa Schut
New York Open (Round 4), 2011

- | | | | |
|----------|------|----------|------------|
| 1. e4 | c5 | 17. Rad1 | Nbd7 |
| 2. Nf3 | d6 | 18. Rxd6 | Qc7 |
| 3. d4 | cxd4 | 19. Nb6! | Nxb6 |
| 4. Nxd4 | Nf6 | 20. Rxf6 | Qc5+ |
| 5. Nc3 | a6 | 21. Kh1 | Bc8 |
| 6. Bc4 | e6 | 22. Nxg7 | Nd5 |
| 7. Bg5 | b5 | 23. Qxe5 | |
| 8. Bb3 | Be7 | | 1-0 |
| 9. Qe2 | O-O | | |
| 10. f4 | b4 | | |
| 11. Na4 | Bb7 | | |
| 12. O-O | Nxe4 | | |
| 13. Bxe7 | Qxe7 | | |
| 14. f5 | e5 | | |
| 15. f6 | Nxf6 | | |
| 16. Nf5 | Qd8 | | |

Appears with Mr. Jiver's **Untitled (#1)**.

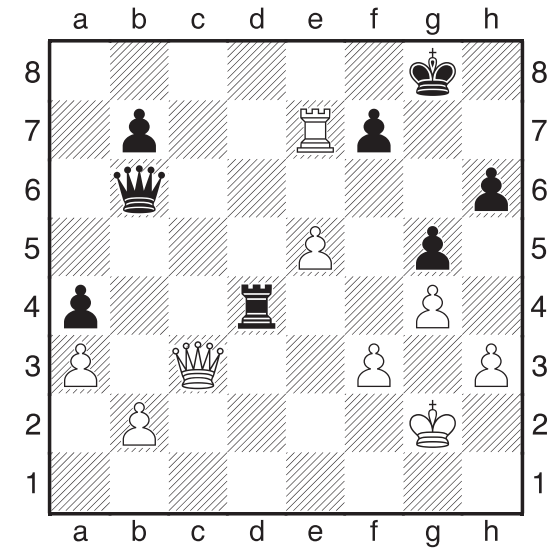


Gata Kamsky - Alex Onischuk

U.S. Championship – Quads (Round 2), Saint Louis, 2010

- | | | | |
|----------------|---------------------|---------------|---------------|
| 1. e4 e5 | 17. Bxf6 gxf6 | 33. Kf3 Kb7 | 49. Rc6+ Kxb5 |
| 2. Nf3 Nc6 | 18. Ncxe4 Be7 | 34. R1d2 f5 | 50. Rxc3 Rxh2 |
| 3. Bb5 a6 | 19. Rd5 Be6 | 35. Rd5 Rf7 | 51. f5 h5+ |
| 4. Bxc6 dxc6 | 20. Rh5 Bf7 | 36. Rxc5 Bxc5 | 52. Kg3 Rh1 |
| 5. O-O f6 | 21. Rf5 Bg6 | 37. Rd5 Kc6 | 53. f6 Rg1+ |
| 6. d4 exd4 | 22. Rf4 c4 | 38. Re5 Rd7 | 54. Kf4 Rg8 |
| 7. Nxd4 c5 | 23. c3 Rhf8 | 39. Rxf5 Rd3+ | 55. Ra3 h4 |
| 8. Ne2 Qxd1 | 24. Nf5 Bd8 | 40. Kg4 Bd6 | 56. a6 Ra8 |
| 9. Rxd1 Bd7 | 25. g4 Re5 | 41. Ne4 Re3 | 57. a7 h3 |
| 10. Nbc3 O-O-O | 26. Kf2 Bxf5 | 42. Nxd6 cxd6 | 58. Kg3 Kc6 |
| 11. Be3 b6 | 27. gxf5 Rg8 | 43. Rf7 Re2 | 59. f7 Kb7 |
| 12. a4 Re8 | 28. Rh4 Rxf5 | 44. Ra7 Rxb2 | 60. Rb3+ |
| 13. a5 b5 | 29. Rd1! Rg7 | 45. Rxa6+ Kd5 | 1-0 |
| 14. f3 f5 | 30. Ng3 Rc5 | 46. Rb6 b4 | |
| 15. Ng3 Nf6 | 31. Rhd4 Be7 | 47. cxb4 c3 | |
| 16. Bg5 fxe4 | 32. f4 Bd6 | 48. b5 Kc5 | |

Appears with Kate Brinkworth's **Dice**.

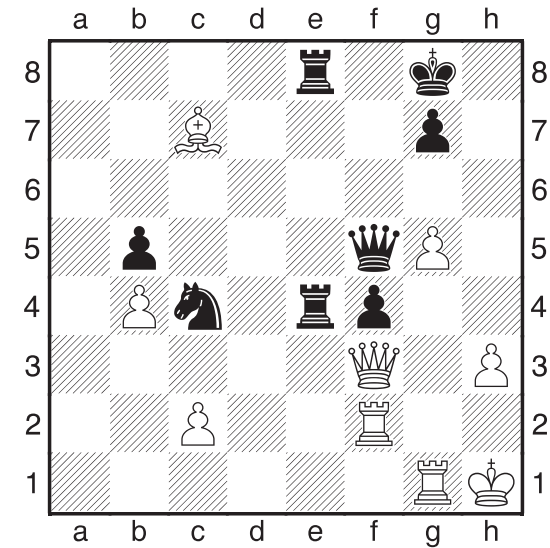


Fabiano Caruana - Michael Adams

London Chess Classic (Round 9), 2017

1. c4	Nf6	19. a3	Ra6	37. Rf3	Bxf3	55. h4	gxf4+
2. Nc3	e5	20. Rac1	Rb6	38. exf3	c6	56. Kxf4	Kf4
3. Nf3	Nc6	21. Rc2	Be6	39. Kh2	Rxg2+	57. Rf7+	Ke3
4. g3	d5	22. Qc3	Rb3	40. Kxg2	Rd5	58. Kg3	Rd1
5. cxd5	Nxd5	23. Qd2	Rd8	41. Rc4	c5	59. g5	Rg1+
6. Bg2	Bc5	24. Qc1	a4	42. Rxc5	Rxd4	60. Kh4	Rg2
7. O-O	O-O	25. Rc5	Rd7	43. Qc3	Qd8	61. Rf6	e5
8. d3	Re8	26. h3	Qd8	44. Rc8	Qb6	62. g6	Rxb2
9. Ng5	Nf6	27. g4	g6	45. Re8	g5	63. Kg5	Rg2+
10. Qb3	Qe7	28. Kh1	Kg7	46. Re7	Kg8	64. Kh6	Rh2+
11. Nd5	Nxd5	29. e5	Bd5	47. e6!	fxe6	65. Kg7	c5
12. Bxd5	Nd8	30. Kg1	Be6	48. Qc2	Kf8	66. Kf7	c4
13. Qc4	Bd4	31. Kf2	Qe7	49. Rh7	Qc6	67. g7	Rh7
14. Bg2	h6	32. Kg1	Rd5	50. Qxc6	bxg6	68. Ra6	
15. Nf3	Nc6	33. Rc4	Ra5	51. Rxh6	Kf7		1-0
16. Be3	Bxe3	34. Rc2	Bd5	52. Kg3	Rd2		
17. fxe3	e4	35. Nd4	Nxd4	53. Rh7+	Kf6		
18. dxe4	a5	36. exd4	Rg3	54. Rb7	Ke5		

Appears with Francesco Jacobello's **Autunno**.

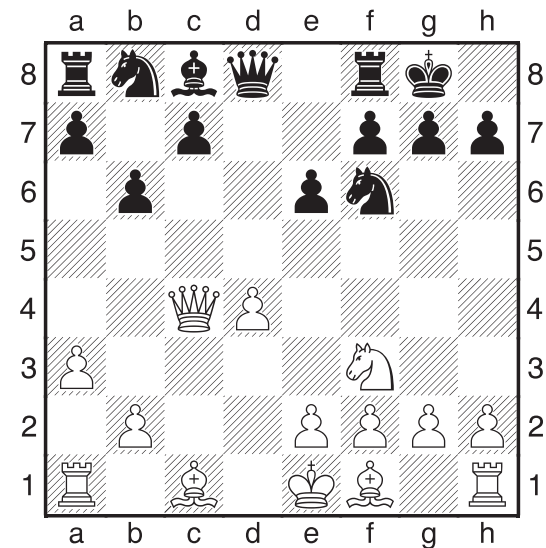


Irina Krush - Nazi Paikidze

U.S. Women's Chess Championship (Round 11), 2016

1. Nf3	Nf6	18. Bxa5	Qc8	35. Qxf4	Rxh3+	52. Rh2	Qg6+
2. g3	d5	19. axb5	ccb5	36. Kg2	Ne3+	53. Kh3	Qe6+
3. Bg2	c6	20. Nd2	exf4	37. Qxe3	Qg4+	54. Kg3	Re1
4. O-O	Bg4	21. gxf4	Nd5	38. Qg3	Rxg3+	55. Rhg2	Qg6+
5. d3	Nbd7	22. Rf3	f5	39. Bxg3	Re3	56. Kh2	Qe4
6. h3	Bh5	23. e5	g5	40. Kh2	Qh5+	57. Bg5	Qxb4
7. Qe1	e5	24. fxc5	Nxe5	41. Kg2	Qxg5	58. Bf4	Qe7
8. e4	dxe4	25. Rf2	Ne3	42. Kh2	Re6	59. Kg3	Re6
9. dxe4	Bc5	26. Nb3	Nxg2	43. Rgg2	Qh5+	60. Kh3	Qd7
10. a4	a5	27. Rxg2	f4	44. Kg1	Qd1+	61. Kh2	Re4
11. Na3	O-O	28. Qc3	Nc4	45. Rf1	Qd4+	62. Kg3	Qf5
12. Nc4	Qc7	29. Qf3	Qf5	46. Rff2	Re1+	63. Rf3	g5
13. Bd2	b6	30. Nxc5	Qxc5	47. Kh2	Qd1	64. Bxg5	Rg4+
14. Nh4	Rfe8	31. b4	Qf5	48. Bf4	Qh5+		O-1
15. Kh1	Bg6	32. Rf2	Re4	49. Kg3	Rh1		
16. Nxg6	hxg6	33. Rg1	Rae8	50. Rh2	Rg1+		
17. f4	b5	34. Bc7?	Re3	51. Rhg2	Rh1		

Appears with Darren MacPherson's **Untitled (Neon Pink v. Lime Green)**.

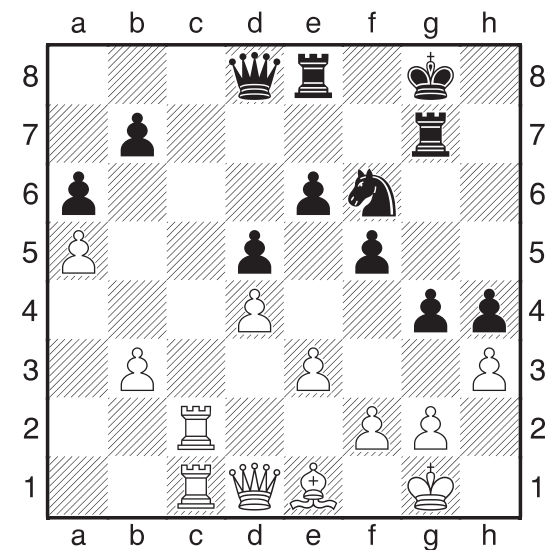


Garry Kasparov - Levon Aronian

Saint Louis Rapid & Blitz (Round 7), 2017

- | | | | | | |
|----------|-----------|-----------|------|---------|------|
| 1. d4 | Nf6 | 17. e4 | Ba2 | 33. Ke3 | fxe5 |
| 2. c4 | e6 | 18. Rc2 | Bb1 | 34. Nd6 | Ra3 |
| 3. Nc3 | Bb4 | 19. Rd2 | Rfd8 | 35. Kf2 | Kf8 |
| 4. Qc2 | O-O | 20. Rxd8+ | Rxd8 | 36. Nb5 | Rb3 |
| 5. a3 | Bxc3+ | 21. Bb5 | Nh5 | | O-1 |
| 6. Qxc3 | d5 | 22. g4 | Nf4 | | |
| 7. Nf3 | dxn4 | 23. Kf2 | f6 | | |
| 8. Qxc4 | b6 | 24. Nc6 | Rd2+ | | |
| 9. h4!? | Bb7 | 25. Ke3 | Rxb2 | | |
| 10. Bg5 | Qd5 | 26. Kxf4 | Rxb5 | | |
| 11. Rc1 | Nbd7 | 27. Rd1 | h6 | | |
| 12. Qxd5 | Bxd5 | 28. h5 | Rb3 | | |
| 13. Ne5 | c5 | 29. e5 | Bd3 | | |
| 14. Bxf6 | Nxf6 | 30. a4 | c4 | | |
| 15. dxc5 | bxc5 | 31. Nxa7 | Ra3 | | |
| 16. f3 | Rab8 | 32. Nb5 | Rxa4 | | |

Appears with Darren John's **Parallax 2.0 Chess Set**.

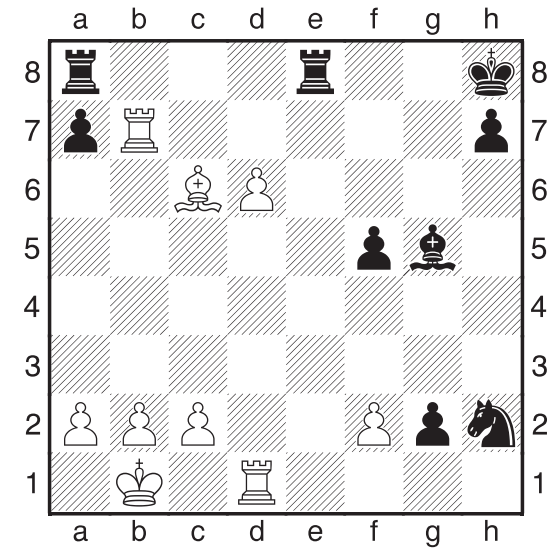


Magnus Carlsen - Gata Kamsky

Sinquefield Cup (Round 1), Saint Louis, 2013

- | | | | | | | | |
|----------|------|----------|-----------|----------|------|----------|-------|
| 1. Nf3 | Nf6 | 16. Nxd7 | Qxd7 | 31. Bxh4 | Kf7 | 46. Kf3+ | Kf6 |
| 2. c4 | c6 | 17. Qe2 | Nf6 | 32. Qe1 | hxc2 | 47. Qg8 | Rh3+ |
| 3. d4 | d5 | 18. Rfd1 | Qc7 | 33. Rc7+ | Re7 | 48. Rg3 | Rxc3+ |
| 4. Nc3 | a6 | 19. h3 | Rad8 | 34. Bxf6 | Kxf6 | 49. Qxc3 | |
| 5. e3 | Bf5 | 20. b3 | Rd7 | 35. Rc8 | Qd6 | | 1-0 |
| 6. Bd3 | Bxd3 | 21. Rc2 | Qd8 | 36. Qh4+ | Kf7 | | |
| 7. Qxd3 | e6 | 22. Rcc1 | h4 | 37. Qh5+ | Rg6 | | |
| 8. O-O | Bb4 | 23. Be1 | Ne4 | 38. f4 | Qa3 | | |
| 9. Bd2 | Bxc3 | 24. Qg4 | g5 | 39. Qh8 | Rg7 | | |
| 10. Bxc3 | O-O | 25. cxd5 | f5 | 40. Qh5+ | Rg6 | | |
| 11. a4 | Nbd7 | 26. Qf3 | cxd5 | 41. Qh8 | Rg7 | | |
| 12. a5 | Ne4 | 27. Rc2 | Rg7 | 42. Qf8+ | Kg6 | | |
| 13. Bb4 | Re8 | 28. Rdc1 | Nf6 | 43. Kxg2 | Rgf7 | | |
| 14. Rac1 | h5 | 29. Qd1 | g4 | 44. Qd8 | Rh7 | | |
| 15. Ne5 | Qc7 | 30. f3! | gxh3 | 45. Rg1 | Qa2+ | | |

Appears with Purling's **Bold Chess: Classic Red v. Shadow Black**

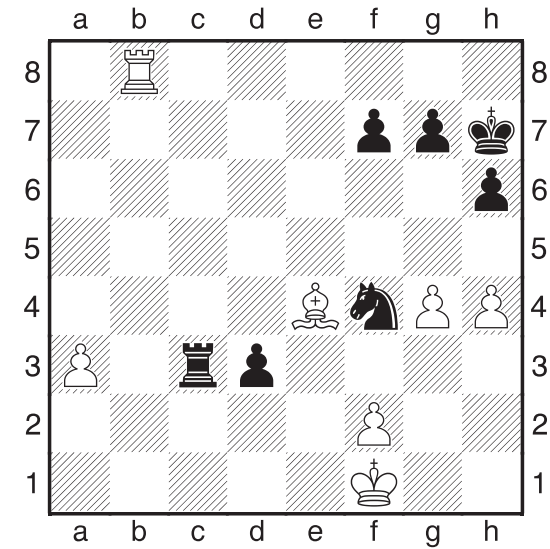


Vladimir Kramnik - Fabiano Caruana

World Championship Candidates Match (Round 4), Berlin, 2018

1. e4 e5	18. Bh2 Kg7	35. a4 Kf7	52. Ka2 Nc2
2. Nf3 Nf6	19. c4 g4	36. Bb5 Ke7	53. Rc1 Nd4
3. Nxe5 d6	20. Ne4 Bxe4	37. a5 Rf4	54. Bd3 Ra4+
4. Nf3 Nxe4	21. Rxe4 Bg5+	38. c3 Kd6	55. Kb1 Nb3
5. Qe2 Qe7	22. Kb1 gxh3	39. Rb7 Rg4	56. Re1+ Kd5
6. Nc3 Nxc3	23. c5 f5	40. Re1 f4	57. Kc2 Nd4+
7. dxc3 Qxe2+	24. Rb4 hxg2	41. a6 h5	58. Kb1 Nf3
8. Bxe2 Nc6	25. Rxb7+ Kh8	42. a7 Ra8	59. Rd1 Ra1+
9. Be3 Be7	26. cxd6 Nf3	43. b4 h4	60. Kc2 Rxd1
10. O-O-O O-O	27. Ba4 Nxb2	44. c4 h3	61. Ba6 Rd2+
11. Rhe1 Bf6	28. Bxc6 Rad8!	45. c5+ Ke5	62. Kc1 Bb2+
12. Nd2 Re8	29. d7 Re2	46. Rb8 Rxa7	63. Kb1 Kxc5
13. Bf3 Ne5	30. Bxg2 Rxf2	47. Rg8 Bf6	64. Bb7 Ne5
14. Bf4 Kf8	31. Bc6 Ng4	48. d8Q Bxd8	65. Rf6 f3
15. Bd5 c6	32. Rxa7 Ne3	49. Rxg4 Bf6	66. Rf5 f2
16. Bb3 Bf5	33. Rg1 h6	50. Rg6 Rb7	O-1
17. h3 g5	34. Rc7 Kg7	51. Be2 Rxb4+	

Appears with Sophie Matisse's **Camouflage**.

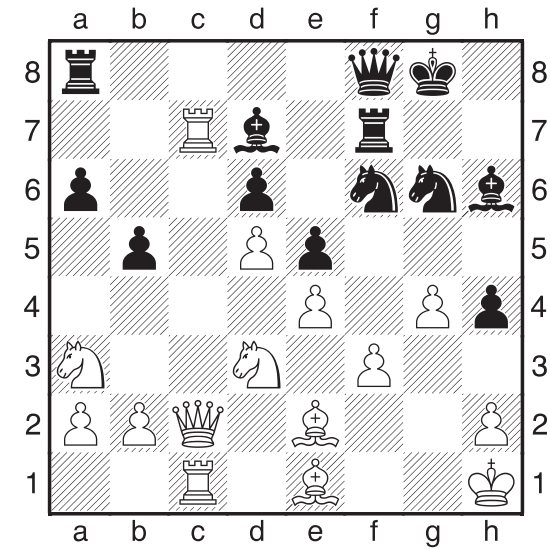


Tegshsuren Enkhbat - Jennifer Shahade

U.S. Women's Chess Championship (Round 2), San Diego, 2004

- | | | | | | |
|----------|------|-----------|-------|-----------------|------|
| 1. d4 | Nf6 | 18. b4 | axb3 | 35. Bf3 | Qd4 |
| 2. Nf3 | e6 | 19. Nxb3 | Rad8 | 36. Qb2 | Qxb2 |
| 3. g3 | c5 | 20. Nd5 | Rfe8 | 37. Rxb2 | Nf4 |
| 4. Bg2 | cxd4 | 21. g4 | Be6 | 38. h4 | Rc8 |
| 5. Nxd4 | d5 | 22. Nxe7+ | Rxe7 | 39. Rb1 | Rc3 |
| 6. c4 | e5 | 23. Nc5 | Qd6 | 40. Rb8+ | Kh7 |
| 7. Nf3 | d4 | 24. Nxe6 | Rxe6 | 41. Be4+ | f5! |
| 8. O-O | Nc6 | 25. Rxe6 | Qxe6 | 42. Bxf5+ | g6 |
| 9. e3 | Bc5 | 26. Rb1 | d3 | 43. Bxg6+ | Kxg6 |
| 10. exd4 | exd4 | 27. Bd2 | Qxc4 | 44. Ke1 | Rc2 |
| 11. a3 | a5 | 28. Rxb7 | Nd4 | 45. Rf8 | Re2+ |
| 12. Ne1 | O-O | 29. Kf1 | Nd5 | 46. Kd1 | Nd5 |
| 13. Nd3 | Be7 | 30. Qe1 | Ne2 | | O-1 |
| 14. Nd2 | a4 | 31. Qb1 | Nec3 | | |
| 15. h3 | Bf5 | 32. Qb3 | Ne4 | | |
| 16. Nf4 | h6 | 33. Qb2 | Nxd2+ | | |
| 17. Re1 | Qd7 | 34. Qxd2 | Re8 | | |

Appears with Sophie Matisse's *Alice in Wonderland*.



Wesley So - Hikaru Nakamura

Sinquefield Cup (Round 6), Saint Louis, 2015

- | | | | | | |
|----------|------|-----------------|-------|----------|------|
| 1. d4 | Nf6 | 18. Nb5 | a6 | 35. Nf2 | Qh4+ |
| 2. c4 | g6 | 19. Na3 | b5 | 36. Kf5 | Rf8+ |
| 3. Nc3 | Bg7 | 20. Rc6 | g4 | 37. Kg6 | Rf6+ |
| 4. e4 | d6 | 21. Qc2 | Qf8 | 38. Kxf6 | Ne4+ |
| 5. Nf3 | O-O | 22. Rc1 | Bd7 | 39. Kg6 | Qg5# |
| 6. Be2 | e5 | 23. Rc7 | Bh6 | | O-1 |
| 7. O-O | Nc6 | 24. Be1 | h4 | | |
| 8. d5 | Ne7 | 25. fxc4 | f3 | | |
| 9. Ne1 | Nd7 | 26. gxf3 | Nxe4! | | |
| 10. f3 | f5 | 27. Rd1 | Rxf3 | | |
| 11. Be3 | f4 | 28. Rxd7 | Rf1+ | | |
| 12. Bf2 | g5 | 29. Kg2 | Be3 | | |
| 13. Nd3 | Ng6 | 30. Bg3 | hxc3 | | |
| 14. c5 | Nf6 | 31. Rxf1 | Nh4+ | | |
| 15. Rc1 | Rf7 | 32. Kh3 | Qh6 | | |
| 16. Kh1 | h5 | 33. g5 | Nxc3+ | | |
| 17. cxd6 | cxg6 | 34. Kg4 | Nhf3 | | |

Appears with DS' Devine & Conquer.



*Cover photography by Michael DeFilippo.
Interior photography courtesy of Purling London.*