

Toddler Tuesdays at the World Chess Hall of Fame

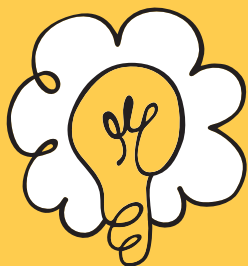
Tuesdays at 9-10 a.m.

Come learn and play! Toddler Tuesdays at the WCHOF are designed for children ages birth to 3 and their caregivers. Each weekly session includes light refreshments and socializing followed by activities focusing on creative and cognitive development.



Movin' & Groovin'

Get moving with music, movement, and motor development activities.



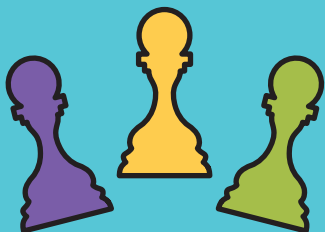
Building Brainpower

Engage your child's developing mind with activities designed to enhance perception and coordination.



Baby Talk

Explore tips and techniques for developing early verbal and pre-literacy skills.



Shapes & Colors

Foster early understanding of the basic elements of shape and color.



The World Chess Hall of Fame is pleased to present:

Kings, Queens & Castles

October 31, 2015 - September 11, 2016

An interactive family exhibit that brings the game of chess to life and provides an engaging introduction to individual chess pieces and game strategy.

Commissioned by the World Chess Hall of Fame, this exhibition was developed in partnership with The Magic House, St. Louis Children's Museum.

\$5 per child | Free for Family-level WCHOF members

All children must be accompanied by an adult. Sessions last approximately one hour. Registration is limited; Reservations are recommended. To reserve your spot, **RSVP to programs@worldchesshof.org**

Mind. Art. Experience.

The mission of the WCHOF is to educate visitors, fans, players, and scholars by collecting, preserving, exhibiting, and interpreting the game of chess and its continuing cultural and artistic significance.

World Chess Hall of Fame

4652 Maryland Avenue in the Central West End
(314) 367-WCHF (9243) | worldchesshof.org

@WorldChessHOF #WorldChessHOF   